



## Retail Snapshot Q1 2017

To gain an understanding of the current small business environment and market potential in downtown New Haven, an inventory of all retail establishments in downtown is conducted on a quarterly basis. This research was completed the week of **March 27, 2017**.

### Retail Overview

The downtown's retail composition resides in four main districts, Chapel Street, 9th Square, Audubon Arts & Retail District, and the Broadway District.

There are **341** retail spaces in downtown, with a current vacancy rate of **6.5%** or **22** retail spaces. **Five** new businesses opened and **five** businesses closed between January and March 2017.

Of the **319** occupied spaces, dining is the dominate niche with **135** food establishments or **42.3%** of businesses. The vast majority of these establishments are independently owned and offer a broad spectrum of cuisine.

Retail stores make up **31.3%** of all businesses in downtown. The remaining establishments are divided into bars/clubs which account for **2.5%** of businesses; beauty represents **5.3%**; services **12.5%**; and **2.2%** are classified as other businesses. **76.2%** of all downtown stores are considered local/independently owned.

Currently, there are 11 properties in transition, with new businesses and expanded residential scheduled to open in the near future.

## Q1 2017 Changes

### 5 BUSINESS OPENINGS

- Amoy's** | 40 Orange St.
- Ben & Jerry's** | 159 Temple St.
- Brother Jimmy's BBQ** | 196 Crown St.
- Coriander** | 21 Whitney Ave.
- Xi'an Cuisine** | 77 Whitney Ave.

### 5 BUSINESS CLOSINGS

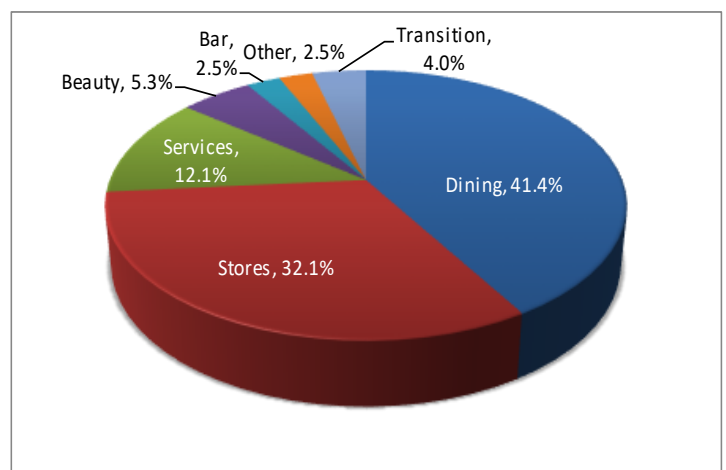
- La Sheesh** | 78 Church St.
- The Happiness Lab** | 756 Chapel St.
- Replay Consignment Shop** | 1020 Chapel St.
- Chao Restaurant Wine Craft**  
77 Whitney Ave.
- American Apparel** | 51 Broadway

District	#Spaces	Vacant	%Vacant	Occupied	%Occupied	IND	% IND	Chain	%Chain	Transition	% TRNS
9th Sq.	113	6	5.3%	107	94.7%	81	75.7%	20	18.7%	5	4.7%
Audubon	67	4	6.0%	63	94.0%	52	82.5%	8	12.7%	3	4.8%
Broadway	34	3	8.8%	31	91.2%	20	64.5%	11	35.5%	0	0.0%
Chapel	127	9	7.1%	118	92.9%	90	76.3%	24	20.3%	3	2.5%
<b>TOTALS</b>	<b>341</b>	<b>22</b>	<b>6.5%</b>	<b>319</b>	<b>93.5%</b>	<b>243</b>	<b>76.2%</b>	<b>63</b>	<b>19.7%</b>	<b>11</b>	<b>3.4%</b>

\* Transition represents a space with a signed lease but the business has yet to open.

## Number of Retail Businesses by Category | Q1 2017

Category	9th Sq.	Audubon	Bdway	Chapel	TOTALS
Dining	33	27	13	62	135
% Dining	30.3%	42.6%	41.9%	52.5%	42.3%
Store	39	17	14	30	100
% Store	36.4%	27.0%	42.5%	25.4%	31.3%
Services	17	11	2	10	40
% Services	15.9%	17.5%	6.5%	8.5%	12.5%
Beauty	9	4	0	5	18
% Beauty	8.4%	6.3%	0.0%	4.2%	5.3%
Bar/Club	3	0	1	4	8
% Bar/Club	2.8%	0.0%	3.2%	3.4%	2.5%
Other	1	1	1	4	7
% Other	.9%	1.6%	3.2%	3.4%	2.2%



Dining	133	Beauty	18	Transition	11
Stores	100	Bar/Club	8	Total	319
Services	40	Other	7		