



## Retail Snapshot Q3 2017

To gain an understanding of the current small business environment and market potential in downtown New Haven, an inventory of all retail establishments in downtown is conducted on a quarterly basis. This research was completed the week of **September 25, 2017**.

### Retail Overview

The downtown's retail composition resides in four main districts, Chapel Street, 9th Square, Audubon Arts & Retail District, and the Broadway District.

There are **342** retail spaces in downtown, with a current vacancy rate of **10.2%** or **35** retail spaces. **Seven** new businesses opened and **ten** businesses closed between **July** and **September** 2017.

Of the **307** occupied spaces, dining is the dominate niche with **132** food establishments or **43.0%** of businesses. The vast majority of these establishments are independently owned and offer a broad spectrum of cuisine.

Retail stores make up **31.3%** of all businesses in downtown. The remaining establishments are divided into bars/clubs which account for **2.9%** of businesses; beauty represents **5.7%**; services **12.1%**; and **2%** are classified as other businesses. **76.5%** of all downtown stores are considered local/independently owned.

Four new leases have been signed with new operations coming soon to 200 College Street, 99 Audubon Street, 37 Church Street and 760 Chapel Street.

## Q3 2017 Changes

### 7 BUSINESS OPENINGS

- Civvies | 845 Chapel St
- Thai Ice Cream | 48 Whitney Ave
- ChengDu Food Trail | 27 Temple St
- dwell | 1022 Chapel St
- Vanity | 144 College St
- Bluemercury | 51 Broadway
- Patagonia | 1 Broadway

### 10 BUSINESS CLOSINGS

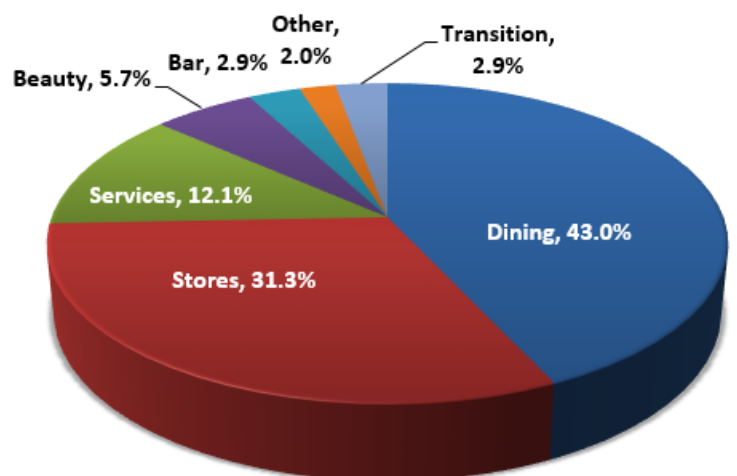
- Thali | 4 Orange St
- Access Health CT | 55 Church St
- Performance Environmental | 111 Court St
- A Bit of Mexico | 123 Court St
- Acme Office Furniture | 33 Crown St
- Denali | 13 Broadway
- K2 | 27 Temple St
- Ah-Beetz | 182 Temple St
- Star Shoe | 250 College St
- Sew Crafty | 87 Audubon St

District	#Spaces	Vacant	%Vacant	Occupied	%Occupied	IND	% IND	Chain	%Chain	Transition	% TRNS
9th Sq.	113	13	11.5%	100	88.5%	77	77.0%	18	18.0%	3	3.0%
Audubon	67	7	10.4%	60	89.6%	51	85.0%	6	10.0%	4	6.7%
Broadway	34	4	11.8%	30	88.2%	18	60.0%	12	40.0%	0	0.0%
Chapel	128	11	8.6%	110	91.4%	89	76.1%	23	19.7%	2	1.7%
<b>TOTALS</b>	<b>342</b>	<b>35</b>	<b>10.2%</b>	<b>307</b>	<b>89.9%</b>	<b>235</b>	<b>76.5%</b>	<b>59</b>	<b>19.2%</b>	<b>9</b>	<b>2.9%</b>

\* Transition represents a space with a signed lease but the business has yet to open.

## Number of Retail Businesses by Category | Q3 2017

Category	9th Sq.	Audubon	Bdway	Chapel	TOTALS
Dining	31	26	13	62	132
% Dining	31.0%	43.3%	43.3%	53.0%	43.0%
Store	38	14	14	30	96
% Store	38.0%	23.3%	46.7%	25.6%	31.3%
Services	15	11	2	9	37
% Services	15.0%	18.3%	6.7%	7.7%	12.1%
Beauty	9	4	0	5	18
% Beauty	8.4%	6.3%	0.0%	4.2%	5.7%
Bar/Club	3	0	1	5	9
% Bar/Club	3.0%	0.0%	3.3%	4.3%	2.9%
Other	1	1	0	4	6
% Other	1.0%	1.7%	0.0%	3.4%	2.0%



Dining	132	Beauty	18	Transition	9
Stores	96	Bar/Club	9	Total	307
Services	37	Other	6		